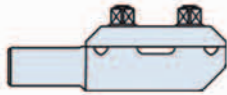


**COMPONENTS**



**DESCRIPTION**

**Connection**  
diameter 15mm/15mm

**Sleeve**  
diameter 15mm/4mm  
diameter 15mm/5mm  
diameter 15mm/9mm

**Pin cluster clamp**

**Carbon tube**  
diameter 15mm, length 100mm  
diameter 15mm, length 125mm  
diameter 15mm, length 150mm  
diameter 15mm, length 200mm  
diameter 15mm, length 250mm

**End caps for carbon tube**

**Lengthening /compression tube**

**Self drilling /self tapping pin**  
Pin diameter 4mm, length 100mm, thread length 35mm  
Pin diameter 5mm, length 110mm, thread length 40mm  
Pin diameter 5mm, length 140mm, thread length 50mm  
Pin diameter 5mm, length 170mm, thread length 50mm  
Pin diameter 5mm, length 210mm, thread length 55mm

**Transfixing pin**  
diameter 5mm, length 250mm, thread length 50mm  
diameter 5mm, length 200mm, thread length 50mm

**Trocar and sleeve**

**Drill brace**

**Tray**

**REFERENCE**

1010-1000

1010-1023

1010-1024

1010-1026

1010-1010

1010-1032

1010-1033

1010-1034

1010-1035

1010-1036

5020-1000

1010-1090

2015-1020

2020-1035

2020-1020

2020-1025

2020-1030

2030-1020

2030-1025

5025-1000

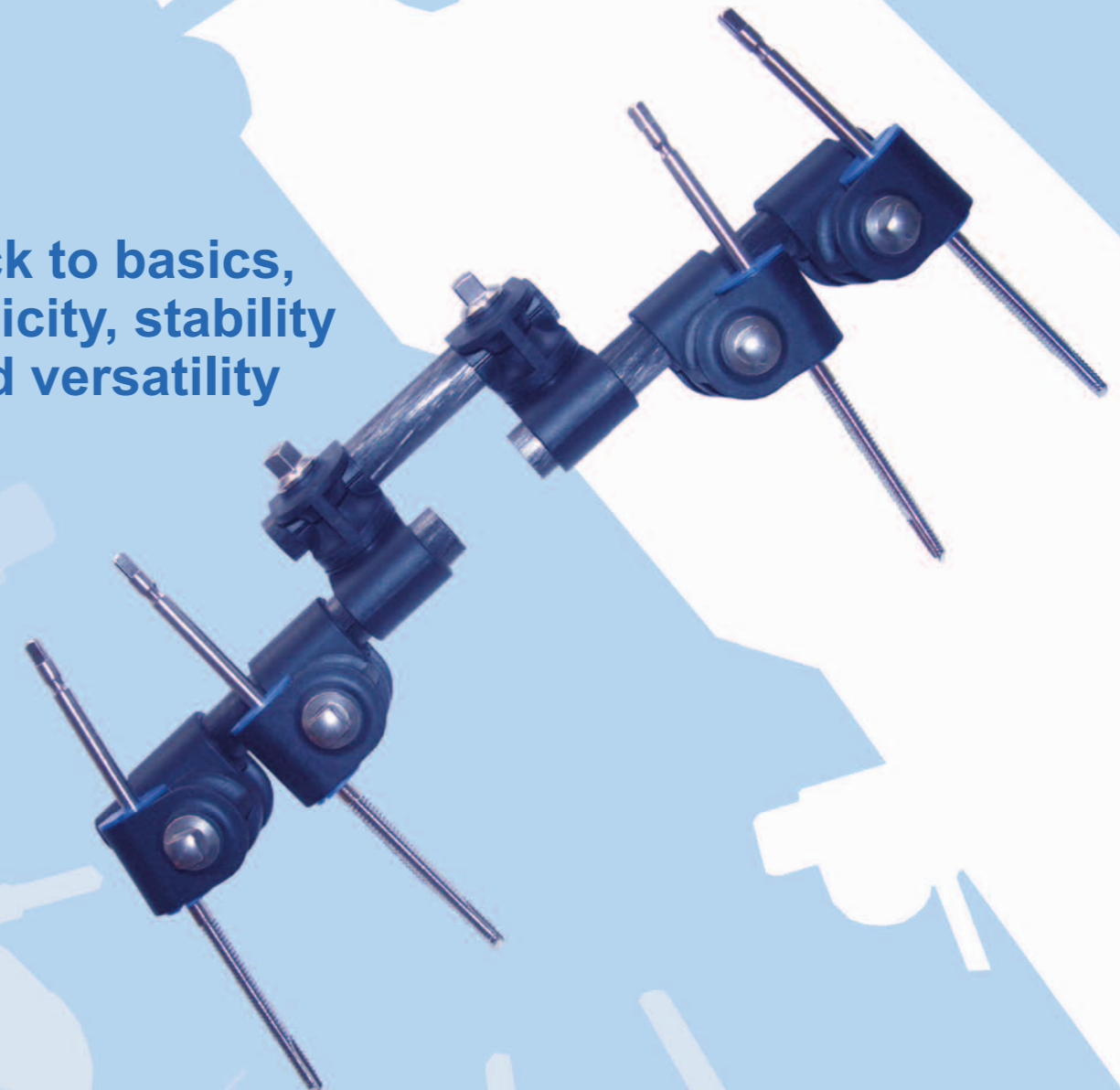
5010-1000

6010-1000



**EXTERNAL FIXATION  
LARGE**

**Back to basics,  
simplicity, stability  
and versatility**



Distributed by :



CE0459  
EN 93/42



Cat. No: STD 09-2004



Gexfix S.A.  
Av. De La Praille 50  
CH-1227 Carouge  
Tél : +41 22 308 16 70  
Fax : +41 22 308 16 79  
www.gexfix.ch  
ISO 9001/2000  
ISO 13485/2003

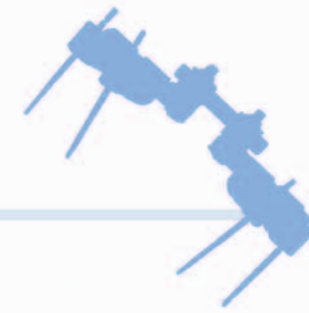
To ensure the best quality of its products and their improvements,  
Gexfix reserves the right to modify all or part of their products

**IT'S GOT TO MAKE SENSE**





# THE GEXFIX EXFIX SYSTEM



## DESIGNED FOR :

- Independent pin placement providing freedom of pin insertion in any plane, subsequently to be connected by carbon tubes to make up fixation frame
  - Pin cluster clamps holding 2 or 3 pins providing simple, single-plane frame
- These configurations allow 3 plane fracture reduction and intra or postoperative correction of fracture alignment

## THE FIXATOR :

- Swiss made
- Made of high performance composite material providing :
  - X-ray transparency for easier fracture visualisation
  - Maximum stability
  - Significantly reduced weight versus other established external fixation frames
  - High strength of components means compact frame configurations and reduced bulkiness compared to other systems
  - Short learning curve for operating surgeon
  - Versatility limited only by the anatomy
  - Sterilisation box containing assorted components for construction of virtually unlimited variety of frame configurations
- Use as a definitive or temporary fixator

## PINS :

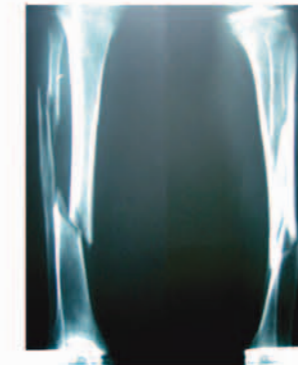
- Half pins for most applications
- Transfixing pins (for selected procedures eg. ankle, HTO)
- All pins are self drilling, self trapping: one step insertion, no need for predrilling
- Excellent holding power in cortical or cancellous bone

## FEW BASIC COMPONENTS :

- Improved hospital inventory management
- Traceability code and catalogue number engraved on each component

## SIMPLE INSTRUMENTATION :

- One drill brace to insert pins and tighten frame components
- Trocar and sleeve protection



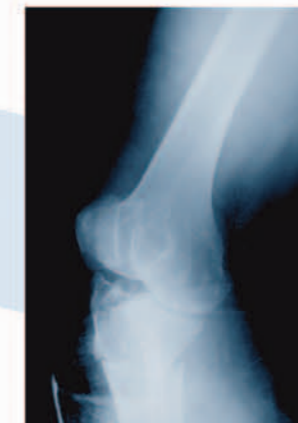
X-ray Pre-Op



X-ray Post-Op



Frame in situ



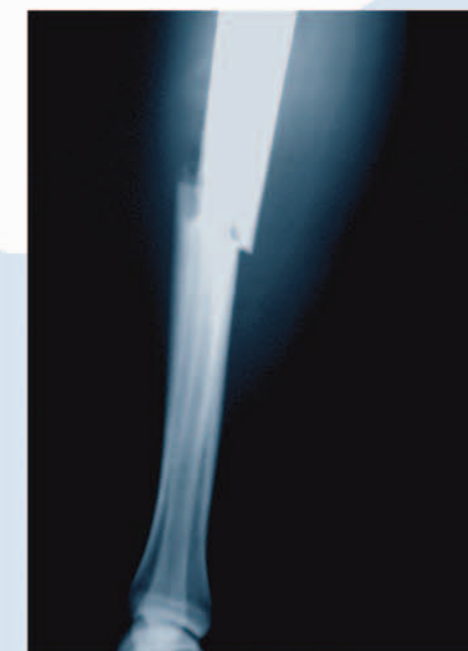
X-ray Pre-Op



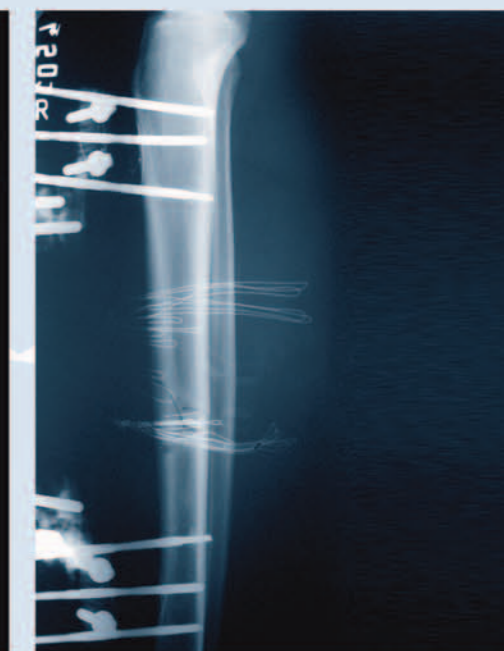
X-ray Post-Op



Frame in situ



X-ray Pre-Op



X-ray Post-Op